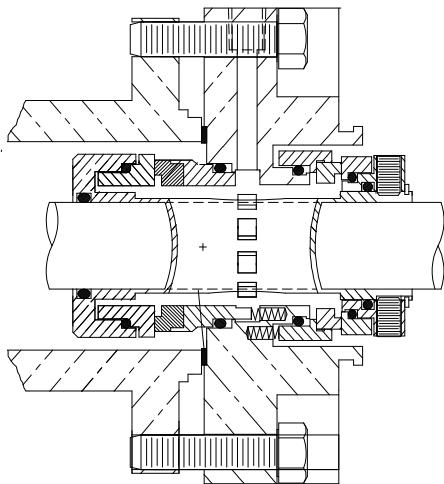
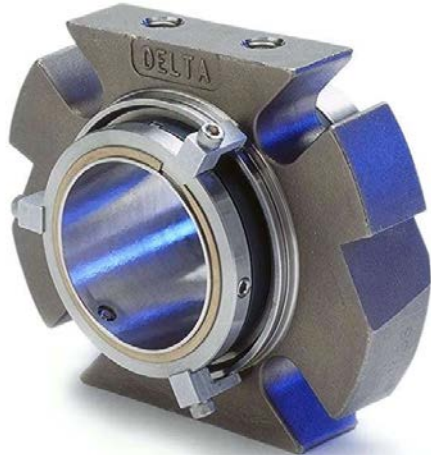




DELTA DOUBLE CARTRIDGE SEAL WITH PUMPING RING FOR MIXER/AGITATOR APPLICATIONS

Designed to accommodate radial and axial shaft movement associated with Mixer / Agitator sealing applications.

STYLE 7000



Technical Features

Radial Motion Capacity:

Sizes: 1.000" - 2.625" = Up to .062 TIR
2.750" - 4.750" = Up to .150 TIR

Axial Motion Capacity:

+/- .040

Optional special metal insert provides a cost effective alternative for corrosive service. This design variation uses a special metal insert (Titanium, Hastelloy "B", "C") for the process wetted surface in a standard 316 SS gland.

Double balanced, stationary design can be operated in two modes. In double mode the barrier fluid pressure higher is than stuffing box pressure. In tandem mode the barrier fluid pressure is lower than stuffing box pressure and can accommodate pressure reversals at the inboard faces.

Instantaneous pressure shift capability eliminates mixer and pressure vessel sealing worries even under jarring purge and pressure cycles.

High efficiency pumping design provides 400% increase in flow, providing superior heat removal through the circulated barrier fluid.

Self venting, bi-directional barrier fluid connections accommodate shaft rotations in either direction on horizontal and vertically mounted equipment.

Inboard shroud provides physical protection to the seal ring.

Large bore barrier fluid ports provide high capacity cooling.

Large internal radial clearances provide efficient barrier fluid flow and heat removal.

Two piece face designs assures optimum seal performance for the most challenging, demanding environments where one piece face construction is vulnerable to premature failure.

Rugged, heavy duty gland castings eliminate distortion related failures.

Rotary inboard faces stabilized under compression are flexibly mounted utilizing o-rings for their shock and vibration absorption qualities.

Positive hold, metal centering clips center the seal in both the axial and radial directions.

Choose from spare parts kits for field repair or the optional factory repair program. State of the art, easy-to-install design uses the least number of components, simplifying field repair, resulting in low life cycle costs.

All seals are pressure tested at the factory assuring 100% sealability during startup.

Application Data

Shaft speed: To 4000 FPM (feet per minute)

Pressure: Vacuum to 250 PSI Inboard

Temperature: See O-ring limitations

Materials

Metal Parts: 316SS, Alloy 20, Hastelloy "C", Titanium

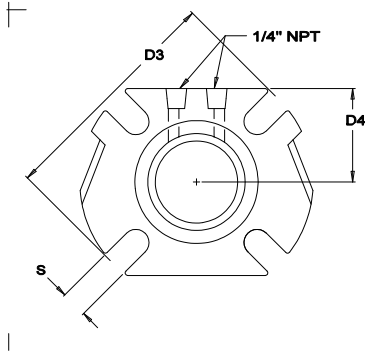
Springs: Hastelloy "C"

Faces: Combinations of Carbon, Sintered-Silicon Carbide, and Tungsten Carbide

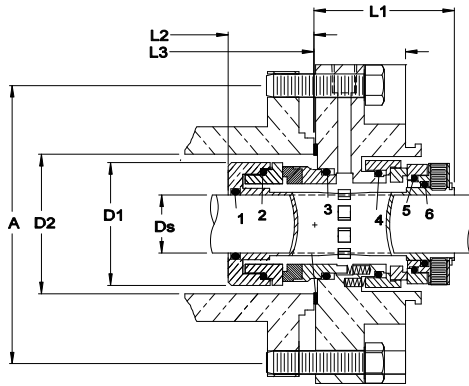
Elastomers: Viton, EPR, Kalrez, Aflas, Teflon

DIMENSIONAL DATA FOR DELTA SEAL STYLE 7000

FRONT VIEW

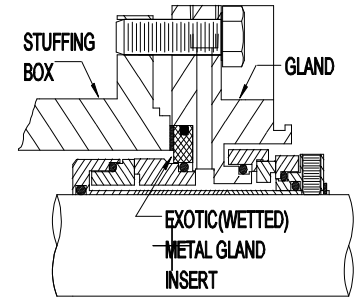


SIDE VIEW



OPTIONAL GLAND FEATURE

Optional exotic metal gland insert for corrosive environments. (Hastelloy "C", "B", Titanium, etc.)



DS Seal Size	D1 Sleeve OD	D2 Min	D2 Max	D3 Gland OD	D4 Gland Flat	A				S Slot Width	L1 Outside Length	L2 Inside Length	L3 Gland Length	Pos. 1 Oring	Pos. 2 Oring	Pos. 3 Oring	Pos. 4 Oring	Pos. 5 Oring	Pos. 6 Oring
						Min. Bolt Circle by Stud Size													
						3/8"	1/2"	5/8"	3/4"										
1.000	1.853	1.953	2.200	4.095	1.908	2.875	3.025	3.212	3.462	0.460	2.130	1.275	0.570	120	129	129	128	126	124
1.125	1.982	2.082	2.250	4.405	2.046	3.135	3.260	3.447	3.697	0.460	2.130	1.275	0.570	122	131	131	130	128	126
1.250	2.112	2.212	2.410	4.410	2.046	3.140	3.265	3.452	3.702	0.460	2.130	1.275	0.570	124	133	133	132	130	128
1.375	2.267	2.367	2.550	4.810	2.065	3.355	3.480	3.667	3.917	0.530	2.130	1.275	1.250	126	135	135	134	132	130
1.500	2.404	2.504	2.700	4.815	2.065	3.360	3.485	3.672	3.922	0.530	2.130	1.275	1.250	128	137	137	136	134	132
1.625	2.532	2.632	2.850	5.440	2.305	3.565	3.690	3.877	4.127	0.560	2.130	1.275	0.570	130	139	139	138	136	134
1.750	2.652	2.752	2.915	5.445	2.305	3.570	3.695	3.882	4.132	0.560	2.130	1.275	0.570	132	141	141	140	138	136
1.875	2.782	2.882	3.110	5.500	2.450	3.780	3.905	4.092	4.342	0.560	2.130	1.275	0.570	134	143	143	142	140	138
2.000	2.907	3.007	3.125	5.840	2.450	3.785	3.910	4.097	4.347	0.560	2.130	1.275	0.570	136	145	145	144	142	140
2.125	3.032	3.132	3.580	6.170	2.460	4.310	4.435	4.622	4.872	0.640	2.130	1.275	1.250	138	147	147	146	144	142
2.250	3.157	3.257	3.655	6.175	2.460	4.315	4.400	4.627	4.877	0.640	2.130	1.275	1.250	140	149	149	148	146	144
2.375	3.273	3.373	3.820	6.420	2.742	4.515	4.640	4.827	5.077	0.640	2.130	1.275	0.570	142	151	151	150	148	146
2.500	3.397	3.497	3.735	6.425	2.742	4.520	4.645	4.832	5.082	0.640	2.130	1.275	0.570	144	151	151	151	150	148
2.625	3.635	3.735	4.030	7.755	3.020	5.065	5.190	5.377	5.627	0.700	2.300	1.160	1.250	146	236	236	236	235	233
2.750	3.973	4.138	4.315	7.760	3.020	5.070	5.195	5.382	5.632	0.700	2.300	1.160	1.250	232	238	238	238	237	235
3.000	4.223	4.388	4.925	8.495	3.331	5.812	5.937	6.124	6.374	0.780	2.300	1.160	1.250	234	240	240	240	239	237
3.250	4.473	4.638	5.025	8.500	3.331	5.817	5.942	6.129	6.379	0.780	2.300	1.160	1.250	236	242	242	242	241	239
3.500	4.723	4.888	5.032	8.505	3.331	5.822	5.947	6.134	6.384	0.780	2.300	1.160	1.250	238	244	244	244	242	241
3.750	4.973	5.138	5.875	9.645	3.750	7.005	7.130	7.317	7.567	0.780	2.300	1.160	1.250	240	246	246	246	246	243
4.000	5.223	5.388	6.125	9.650	3.750	7.010	7.135	7.322	7.572	0.780	2.300	1.160	1.250	242	248	248	248	248	245
4.250	5.473	5.638	6.125	9.655	3.750	7.015	7.140	7.327	7.577	0.780	2.300	1.160	1.250	244	250	250	250	250	247
4.500	5.723	5.888	6.225	9.660	3.750	7.020	7.145	7.332	7.582	0.780	2.300	1.160	1.250	246	252	252	252	250	249

Distributed By:

(Phone)
(Fax)



Manufactured By:

Delta
44 Propper Lane
Fall River, MA 02720
508-324-4032 (Phone)
508-324-4339 (Fax)

