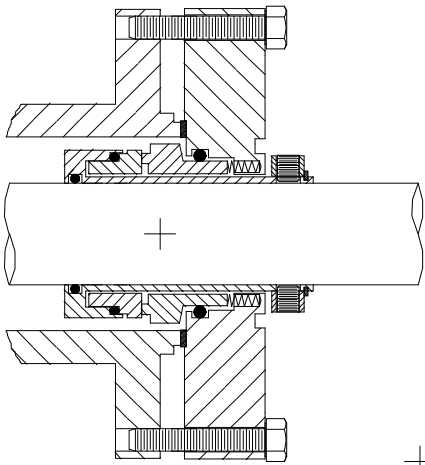
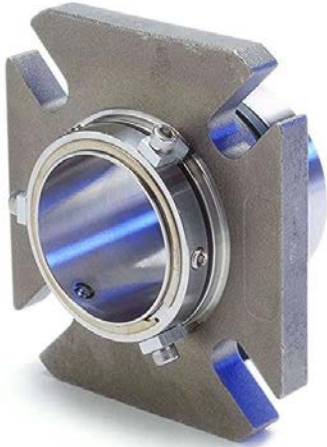




DELTA SINGLE CARTRIDGE SEAL WITH SLIM PROFILE DESIGN

Fits most pumps with minimal axial space outboard of the stuffing box without pump modifications.

STYLE 3500



Technical Features

Cost effective cartridge design ideal for OEM component seal replacements and packed pump conversions.

Fits All ANSI Frame pumps without equipment modification.

Seal accommodates equipment with short first obstructions or sleeve extensions (1.375" outside length required).

Low cost cartridge design for non-corrosive services or optional exotic metal inserts available for corrosive environments. (Hastelloy "C", "B", and Titanium)

Rugged, heavy duty gland castings eliminate distortion related failures typically encountered on competitors "low cost, light duty gland designs".

Rotary inboard faces stabilized under compression are flexibly mounted utilizing o-rings for their shock and vibration absorption qualities. This eliminates premature fractures in the faces under thermal and mechanical shock that can cause catastrophic failures in other designs with faces under tension.

Balanced stationary cartridge design utilizes all static o-rings, which eliminates damage to the pump shaft/sleeve or seal normally caused by rotary pusher component or pusher cartridge type seals, allowing use of solid pump shafts that minimize deflection.

Positive hold, metal centering clips center the seal in both the axial and radial directions.

Choose from spare parts kits for field repair or the optional factory repair program. State of the art, easy-to-install design uses the least number of components, simplifying field repair, resulting in low life cycle costs.

All seals are pressure tested at the factory assuring 100% sealability during startup.

Optional Features and Ordering Information:

- Special metal insert: order seal model S500

Application Data

Shaft speed: To 3600 RPM

Pressure: Vacuum to 400 PSI

Temperature: See O-ring limitations

Materials

Metal Parts: 316SS, Hastelloy "C", Titanium

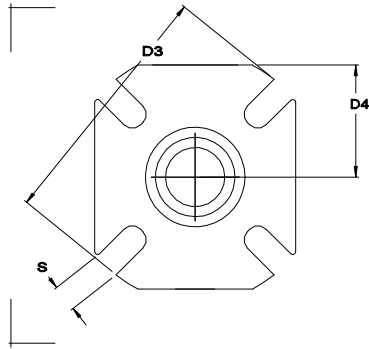
Springs: Hastelloy "C"

Faces: Combinations of Carbon, Sintered-Silicon Carbide, and Tungsten Carbide

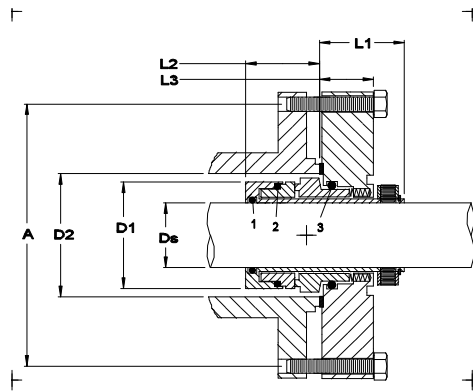
Elastomers: Viton, EPR, Kalrez, Aflas, Teflon

METRIC DIMENSIONAL DATA FOR DELTA SEAL STYLE 3500

FRONT VIEW

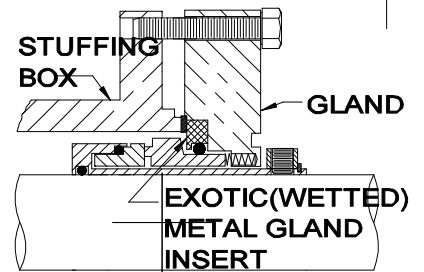


SIDE VIEW



OPTIONAL GLAND FEATURE

Optional exotic metal gland insert for corrosive environments. (Hastelloy "C", "B", Titanium, etc.)



DS Seal Size	D1 Sleeve OD	D2 Min	D2 Max	D3 Gland OD	D4 Gland Flat	A				S Slot Width	L1 Outside Length	L2 Inside Length	L3 Gland Length
						Min. Bolt Circle by Stud Size							
						8mm	10mm	12mm	16mm				
24	42.7	44.1	51.5	104.7	47.4	68.3	70.4	72.3	76.2	11.1	34.9	33.3	15.8
25	42.7	44.1	51.5	104.7	47.4	68.3	70.4	72.3	76.2	11.1	34.9	33.3	15.8
28	43.5	44.4	55.8	104.7	47.4	68.3	70.4	72.3	76.2	11.1	34.9	27.7	15.8
30	49.7	50.8	57.2	111.1	49.2	76.7	78.8	80.8	84.7	14.2	34.9	33.3	15.8
32	49.7	50.8	57.2	111.1	49.2	76.7	78.8	80.8	84.7	14.2	34.9	33.3	15.8
33	49.7	50.8	61.2	111.1	49.2	76.7	78.8	80.8	84.7	14.2	34.9	27.7	15.8
35	49.7	50.8	61.2	111.1	49.2	76.7	78.8	80.8	84.7	14.2	34.9	27.7	15.8
38	56	57	64.7	121.9	54.3	83.6	85.6	87.6	91.5	14.2	34.9	33.3	15.8
40	59.5	60.3	68.5	121.9	54.3	83.6	85.6	87.6	91.5	14.2	34.9	33.3	15.8
43	62.4	63.5	72.3	131.1	58.7	88.2	90.2	92.2	96.1	13.4	34.9	33.3	15.8
45	65.5	66.5	74.1	131.1	58.7	88.2	90.2	92.2	96.1	13.4	34.9	33.3	15.8
48	65.5	66.5	74.1	131.1	58.7	88.2	90.2	92.2	96.1	13.4	34.9	33.3	15.8
50	68.9	69.8	78.9	139.7	59.6	94.5	96.6	98.6	102.4	14.2	34.9	33.3	15.8
53	72	73	84.5	148.8	62.2	100.1	102.2	104.1	108	17.5	34.9	33.3	15.8
55	75.1	76.2	90.9	156.7	65	109	111	113	116.9	17.5	34.9	33.3	15.8
58	78.4	79.3	92.8	156.7	65	109	111	113	116.9	17.5	34.9	33.3	15.8
60	78.4	79.3	92.8	156.7	65	109	111	113	116.9	17.5	34.9	33.3	15.8
63	81.6	82.5	97	171.4	69.6	116.6	118.7	120.7	124.5	17.5	34.9	33.3	15.8
65	84.8	85.7	98.4	171.4	69.6	116.6	118.7	120.7	124.5	17.5	34.9	33.3	15.8

© 2005 Delta Mechanical Seals. All rights reserved.

Distributed By:

(Phone)
(Fax)



Manufactured By:

Delta
44 Probbler Lane
Fall River, MA 02720
508-324-4032 (Phone)
508-324-4339 (Fax)